



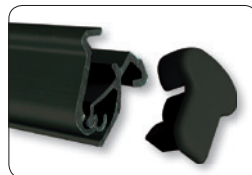
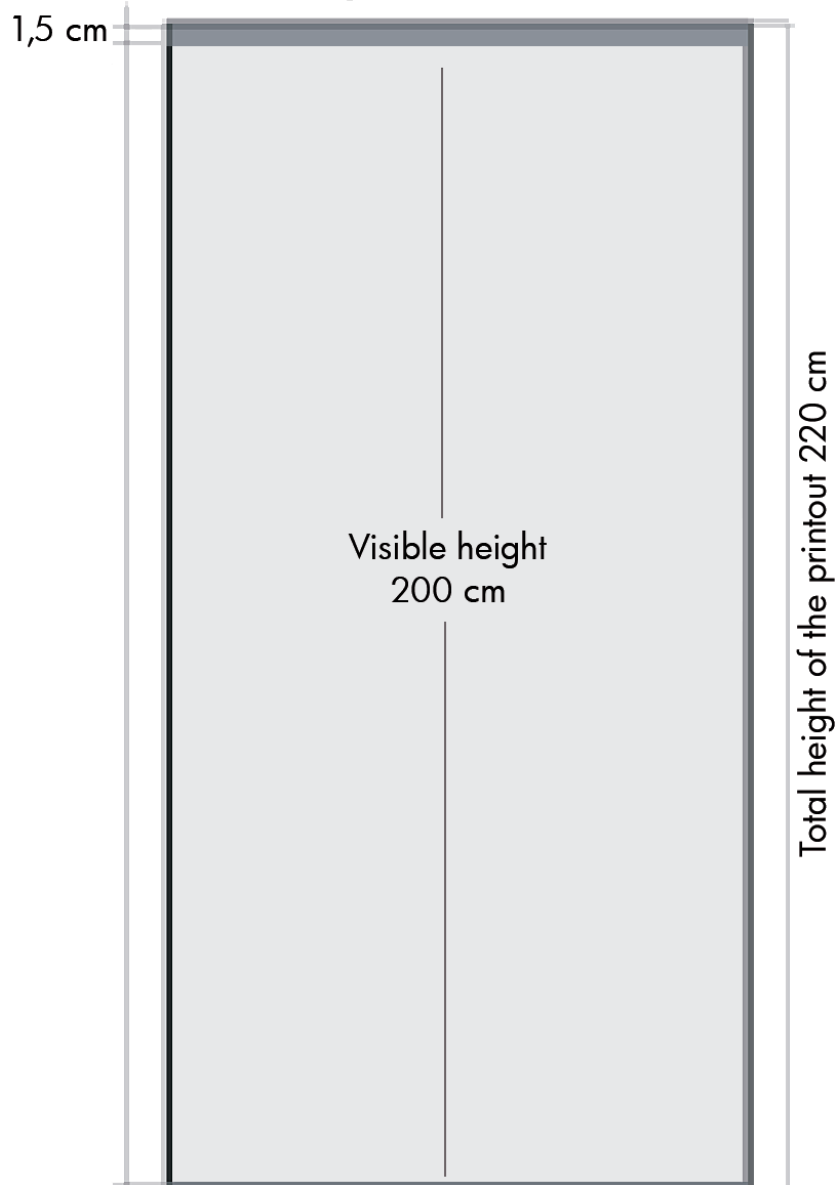
**Bannermaterial**  
We recommend  
200-280 g  
polyester

🇬🇧 Single-sided roll-up produced in black anodized aluminum quality. Solid construction and very nice design. Clamp profile in top and strong tape on the bottom roll makes mounting easy. Black luxury bag is included in the price. New tape must be mounted when changing the banner. Delivered without banner.

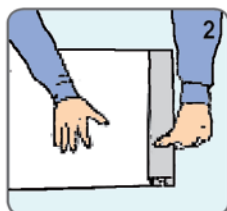
🇩🇪 Einseitiger Roll-up aus solidem schwarz-eloxiertem Aluminium hergestellt. Kräftige Konstruktion im stilgerechten Design. Das Klebeband an der Rolle sowie die Klemmleiste oben, ermöglicht eine leichte Montage des Banners. Kräftige schwarze Luxus Tasche ist im Preis einbegriffen. Beim Wechseln des Banners muss neues Klebeband an der Rolle montiert werden. Wird ohne Banner geliefert.

🇩🇰 Enkelt-sided roll-up udført i sort-eloxeret aluminium. Kræftig konstruktion i stilrent design. Topprofil med klemmleiste og kræftig tape på bundrulle gør, at det er let at montere banneret. Kræftig sort luksus taske er inkluderet i prisen. Ved udskiftning af budskab, skal ny tape monteres på bundrulle. Leveres uden banner.

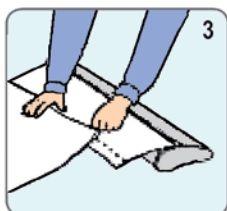
## Graphic dimensions:



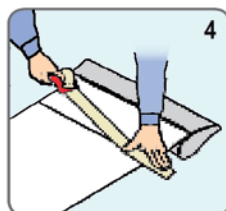
1  
Make the front side of the graphic down on the desk, open the graphic clip to a suitable angle, then insert the top of graphic into the gap. Be sure to make tightly and right in order.



2  
Make the flexible clip back until it is flat. Lock the graphic tightly.



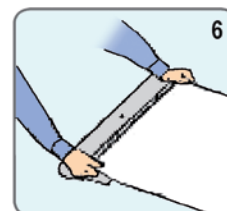
3  
Make the front side of the graphic up and the back of roll-up up, put the leading paper in good place, tear down the double-glue film, make the back of graphic glue to it. **Notice:** When gluing, make it right in line with the black parallel.



4  
Apply the glue tape to the joint between graphic and leading paper, firm it better.



5  
Press the graphic with strength by hand, meantime, press the roll-up body. Pull the graphic out slightly, loose the lock latch and pull it out completely. **Notice:** Avoiding the graphic scrolling instantly.



6  
Loose the hand pressing the graphic, but do not leave the graphic. Make it scroll gradually and adjust it while scrolling until the whole graphic smoothly scrolling in.

## Installation instruction

Model	Art.no.	Banner size	Visible Banner	Colour	Total W x H	Package size and weight	Pallet size and quantity
310	4460	83 x 220 cm	83 x 200 cm	Black	90 x 210 cm	13 x 92 x 25 cm 6,0 kg	80 x 120 x 220 cm 50 pcs.
	4556	Spotlight 50W		Black		8 x 7 x 46 cm 0,4 kg	80 x 120 x 220 cm 400 pcs.